

VASA ORDER OF AMERICA

A Swedish-American Fraternal Organization since 1896

Vol. 19, No. 2

February 1995

MONITOR'S FIRST SOCIAL for 1995 will be on Friday, February 3. Social time starts at 6:00 pm and our popular pea soup and pancakes supper will be served at 6:30—all you can eat for only \$4.50 with children under 12 free.

Pea soup with ham and a dessert of Swedish pancakes with lingonberries is a traditional Thursday night meal throughout Sweden. Do come out and enjoy a real Swedish meal and a nice program that our cultural leader, Jewel Wright, has planned for us. This will be a good time to bring family, friends, and prospective members.

There will be no regular business meeting, but we will have joint installation of new officers with Sierra Kronan lodge. The joint installation planned for January 13 in Roseville had to be canceled because of the "Storms of 95." So all officers, please plan to attend.

Chairman's Message

Hope none of our members suffered from flooding during the terrible storms we've been having. The new year certainly started out with a vengeance. It was one time I was glad I live in the foothills: the water just ran off so I couldn't get flooded and I was below the snow line. The lights didn't even flicker. So I

just watched TV and kept the fire going and thanked my lucky star.

We all want to welcome our 15 new members. Sorry so many of them couldn't be at our January meeting to be initiated. We hope you can be with us for our February social, so we can get better acquainted.

Our April 1 Scandinavian Festival is coming up fast. This is a big annual event and we'll need all the help we can get. It's one way of getting to know other members, and we have a lot of fun, too.

Let's hope for a moderate continuation to 1995, that is, neither draught nor flooding. See you all on February 3!

*In Truth and Unity,
Margaret Carlson*



Sweden Day

A Sweden Day planning meeting will be held at Nord Lodge on February 5. Our delegates are Myrtle Widmark and Audrey Fales.

Friendship

Our sympathy goes out to Jill and Brian Stockham. Jill's son and Brian's stepson, only 33 years old, passed away in December

We are also keeping Helen Tura in our thoughts. She is doing as well as can be expected.

Viola Bodelson has broken an arm. That's bad enough in itself but it also happened in the midst of moving. We hope Viola and Karin have overcome the worst of it now and are getting settled in.

George Uffens fell while bike riding, but it didn't bother him much. Just goes to show "Swedes" are tough old birds.

Eivor Pfannkuch is doing OK after all her hip surgery. She is up and about some but won't know how things really are until her next doctor's appointment.

Britt-Marie Andersson has also had hip surgery. She just recently had complete hip-replacement on the left side and will be going back to the hospital later for hip-replacement also on the right side. Britt-Marie and Lennart send greetings to all their friends at Monitor Lodge and also best wishes for the new year.



Happy Birthday!



to the following Monitor members, who are having birthdays in February:

- 2/01 - Cecile Spencer
- 2/02 - Lucy Dahlberg
- 2/03 - Mimi Hjersman
- 2/03 - Mary Ingvarlsen
- 2/04 - Kevin Bergstrom
- 2/04 - Stanley Hagstrom
- 2/05 - Annabel Audet
- 2/05 - Lisa Bleasdale
- 2/06 - Charles Johnson
- 2/08 - Milo Ahlstrand
- 2/08 - Helen Starkey
- 2/09 - Ethel Johnson
- 2/09 - Ruth Volkoff
- 2/10 - Carol Kwolek
- 2/11 - Maude Udvardy
- 2/13 - Jill Stockham
- 2/18 - Richard Westrup
- 2/19 - Kurt Pfannkuch
- 2/20 - Audrey Fales
- 2/22 - Jone Canady
- 2/22 - Marie Tillman
- 2/24 - Hans Fors
- 2/26 - Vera Anderson
- 2/26 - Birgit Dillard



The New Program Books

will be available at the February social. Don't forget to pick yours up!

Next Newsletter

Please send all your input for the March newsletter to Ingrid Kennedy no later than **Friday, February 17.**

Presenting

our member of the month,
Herb Johnson:

Since both my parents were from Sweden, Swedish was the principal language in our home. Also, most of our social life involved our relatives and Swedish friends. Following my first day in school, the teacher told my parents that English should now be spoken in our home. These years of speaking Swedish helped on my three trips to Sweden, including two with Millie.

I joined the Air Force and graduated from flying training in 1943 as a 2nd lieutenant and earned my silver wings. Training for combat in the B-26 twin engine bomber (nicknamed the Widow Maker) covered ten bases in the U.S. until I was finally stationed in England in 1944.

I flew 65 missions as a Lead Bombardier, including two on D-Day, and then continued on B-29s in the Pacific. A three-month statistical course at Harvard University gave me a chance to live at home. Millie corresponded with me throughout my travels and we were married before leaving for my next assignment in Tampa, Florida. The war in Japan ended before we got settled and I was transferred to Shreveport, Louisiana, as the Base Statistical Control Officer.

In 1948, I attended a nine-month course at Mather AFB which qualified me as a radar bombardier and celestial navigator. I was an instructor there for five wonderful years before we were moved to Salina, Kansas.

In Sacramento, we became members of the New Scandinavian Folk Dance Club under the direction of Adolf and Hildur Benson. Ruth and Arlie Veis also

joined at this time and helped us meet other "Vikings" in the Sacramento area.

During six years in Kansas, I served as squadron navigator for a B-47 organization. This jet bomber was newly developed and became a mainstay of the Strategic Air Command. I was promoted to Major and, as it turned out, this aircraft never had to "fire a shot in anger."

I spent the next year at Søndrestrøm AFB on Greenland as Base Operations Officer. There was no family housing, so Millie and our two daughters lived in Boston near her folks. As the Protocol Officer I met the King and Queen of Denmark who came on a visit. Queen Ingrid was Swedish so I was able to speak with her and accompanied her on a mountain hike to pick wildflowers and observe the herds of caribou.

In 1961, I was assigned to Otis AFB at Cape Cod. In addition to my flying duties, I became Protocol Officer for President Kennedy when he came to his summer home.

I retired in 1964 after 23 years of active duty. We moved to Sacramento where I got my Master's Degree in social work. I retired again in 1985 after 18 years as a psychiatric social worker with the mentally ill and developmentally disabled.

We have a son, Don, daughters Gail and Christine, and four grandchildren. We joined Monitor Lodge as soon as we returned to Sacramento. The children were active in the Children's Club. Don was a star boy in the *Lucia-fest* and Christine was Lucia the first year in Monitor Lodge.



Minutes from the January 6 General Meeting

1. Meeting was opened at 6:45 pm by Chairman Margaret Carlson and roll was called.

2. Twelve membership applications were read, voted on, and accepted. The others being unable to attend, initiation was held for four of the new members.

3. Last meeting's minutes were read and approved.

4. The Friendship Committee reported the recent death of Jill Stockham's son. Illness and injury had been suffered by Margaret Linn, Viola Bodelson, George Uffens, Richard Forsty, Eivor Pfannkuch, and Helen Tura.

5. Jewel Wright told about how Swedes celebrate the end of the Christmas season on January 13, *Trettondag Knut*.

6. Secretary Marianne Ek has been sending in articles to the Vasa Star, but it usually takes quite a while before they are published.

7. Ethel Johnson invited everyone to the next Scandinavian Festival planning meeting at the Norway Hall, Monday, January 23, 7 pm.

8. Margaret Carlson resigned after many years as chairman of the *Smörgåsbord*. It's getting to be too much work and tickets did not sell well this time. She asked for ideas for next year.

9. Correspondence included thank-you notes for Christmas plants and cookies.

10. Future Events:

a. Myrtle Widmark and Audrey Fales were elected delegates to the Sweden Day meeting in Stockton on February 5.

b. Installation of officers will take place at Sierra Kronan, January 13. [Later rescheduled for Monitor's February meeting.]

c. Delegates to the District Convention in April are Margaret Carlson, Myrtle Widmark, Audrey Fales, and Leisma Kraustins with Gail Nemy and Jewel Wright as alternates.

d. Margaret will have a board meeting at her home on January 15 to discuss ideas for future events. [This meeting was canceled due to the weather.]

11. Viola Hallen is no longer able to take care of Monitor's storage shed, so a new facility

will have to be located.

12. Friends of Margaret Carlson's, Oscar and Ruth Anderson, have donated an artificial Christmas tree with lots of beautiful decorations to Monitor Lodge.

13. Kurt Pfannkuch introduced a proposal to establish a new associate membership with reduced annual dues for members on a fixed income. [Copy attached.]

14. As of the end of 1994, Monitor had 205 members.

15. Good of the Order:

a. Kurt welcomed the new members.

b. Myrtle announced the Swedish classes will resume February 12.

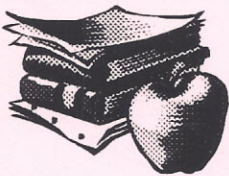
c. The new program books will be available at the February meeting.

16. Bills and financial reports were read.

17. The meeting closed at 8:15 pm and refreshments followed.

— Jean Anderson,
Assistant Secretary

Scholarship



It's the time of year again for high school seniors and college students to start

working on the Monitor scholarship applications. Scholarship committee members are Christine Bodelson, Jewel Wright, and Ronny Kagstrom. Please contact them for more information.

Roster Changes

Please add the following new members to your new program book:

Edwin J. Cook
P.O. Box 190
Penryn, CA 95663
652-5705

Richard & Gloria Eriksson
10609 Lambrusca Drive
Rancho Cordova, CA 95670
635-4640

Helen J. Starkey
5528 Laguna Park Drive
Elk Grove, CA 95758
684-0314

Alice Swanfeldt's new address:
c/o Joyce Dalton
90 Red Cypress Court
Danville, CA 94526
510/736-0162

Lynn Lundberg has a new postal address
Antelope, CA 95843
(same street)

February Dues Anniversaries

If you have already paid, please ignore this reminder and thank you for your promptness.

Evelyn Anderson
Annika and Thomas Anderson
Mirjam Auger
Jean Barney
Robert Barrett
Judy Beal
Sue Bergman
Keith Bergstrom
Kevin Bergstrom
Russel Ellis
Bertil Erickson
Anne and Hans Fors
Doris and Ronald Haas
Julius Holmquist
Helen Jensen
Ethel Johnson
Linda Johnson
Lynn Lundberg
Holgar Nordquist
Lilmer Olson
Lars Ostlund
Anne Phelan
Louise Sims
Cecile Spencer
Brian and Jill Stockham
Helen Tura
Ruth Volkoff
Debbie Nickless

Dues are \$14 a year, payable to Monitor Lodge No. 218. You may pay them at the February meeting or by mail to our financial secretary, Gail Nemy, 4239 Daybreak Lane, Sacramento, CA 95821.



Nål och Tråd

We will be meeting twice in February and all Monitor members are invited.



Tisdagen den 14 februari, kl.

19.00, hos:

Ethel Johnson
4344 53rd Street
Tel.: 457-0966

Tisdagen den 28 februari, kl.

19.00, hos:

Elizabeth Johnson
4332 T Street
Tel.: 452-2470

THE SCANDINAVIAN FESTIVAL,

scheduled for April 1, is coming up fast and we need lots of volunteers. Please come to the next planning meeting, Monday, February 27, 7 pm, at the Norway Hall. For information, please call Ethel Johnson, 457-0966.

For More Information about Monitor Lodge, Please Contact

■ Membership Committee members Jean Anderson 682-7438 or Ethel Johnson 457-0966

■ Secretary Marianne Ek at 372-7824

■ Vice Chairman Arthur Niemoller, 631-9330

■ Chairman Margaret Carlson, 742-9346



I see you at the meetings

but you never say hello
You're busy all the time you're there
with those you already know
I sit amongst the members
yet I'm a lonesome guy
The new ones are as strange as I
but you old members pass me by
But darn it, you folks welcomed us in
and talked of fellowship
You could just walk across the room
But you never made the trip
Why can't you nod and say hello
or stop and shake my hand
Then go and sit among your friends
Now *that* I'd understand
I'll be at your next meeting
perhaps a nice time to spend
Do you think you could introduce yourself?
I want to be YOUR FRIEND

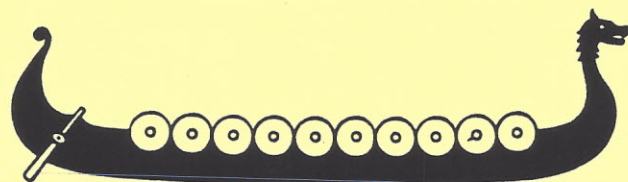
— Author unknown

Happy



Valentine's Day!

12th Annual
SCANDINAVIAN
FESTIVAL
Sacramento



Denmark • Finland • Norway • Sweden

SATURDAY, APRIL 1, 1995

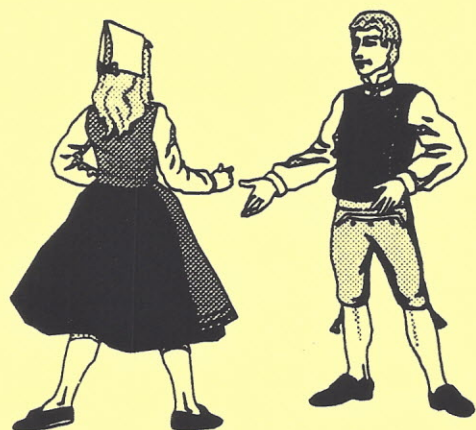
10:00 am - 3:00 pm

St. Ignatius Parish Center

3235 Arden Way

(Two blocks west of Watt Avenue)

Adults \$1 donation - Children under 12 free



- ♪ Scandinavian food (open-face sandwiches, viking-on-a-stick, æbleskiver, pannkakor, etc.)
- ♪ Baked goods sale
- ♪ Scandinavian crafts
- ♪ Music and entertainment
- ♪ Door prizes
- ♪ For information, call 489-5729, 483-4496, 989-3143, or 783-8830

MAIWAHIAE

MAIWAHIAE



MAIWAHIAE - MAIWAHIAE - MAIWAHIAE

MAIWAHIAE MAIWAHIAE

MAIWAHIAE MAIWAHIAE

MAIWAHIAE MAIWAHIAE

MAIWAHIAE MAIWAHIAE

MAIWAHIAE MAIWAHIAE

MAIWAHIAE MAIWAHIAE

MAIWAHIAE MAIWAHIAE

MAIWAHIAE MAIWAHIAE

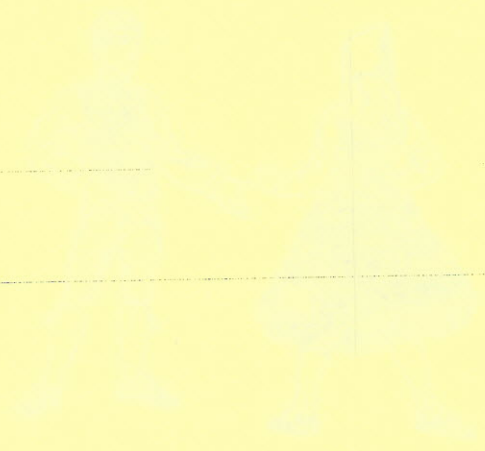
MAIWAHIAE MAIWAHIAE

MAIWAHIAE

MAIWAHIAE MAIWAHIAE

MAIWAHIAE MAIWAHIAE

MAIWAHIAE MAIWAHIAE



Monitor Lodge #218

Proposal to Establish New Financial Level of Membership

It is proposed that Monitor Lodge #218 consider the establishment of a new level of membership. This proposal should be reviewed by all members and considered as a permanent change to our by-laws.

The Proposal is as follows:

Monitor Lodge #218 should add an Associate Membership which would be a full voting membership, but with reduced annual dues. The rationale for this status is to provide relief for those members on a fixed income, but who wish to continue their participation in Lodge activities. The following rules are suggested for administering this type of membership:

1. The member must have been a full dues paying member for a minimum of ten (10) years prior to applying for Associate Membership.
2. The member must request associate status in writing. The request will be reviewed by an executive committee consisting of the Chairman, Financial Secretary, and Recording Secretary and that committee shall be enabled to approve the request based on verification of need.
3. The associate status may be rescinded if financial conditions improve. The Lodge may ask persons holding such membership to rejustify their need periodically.
4. The dues for an Associate Member shall be the dollar amount (rounded up) sufficient to cover all District and Grand Lodge assessments plus the newsletter postage.
5. The Lodge shall advise Associate Members annually of the dues amount, based upon current assessments.
6. The associate status and dues shall take effect on the members' next membership anniversary.

As of January 1995, the total annual "fixed" cost of membership in Monitor Lodge is \$15.25. This is the total of District and Grand Lodge assessments and the postage cost of ten issues of our newsletter. Our dues are currently only \$14/year, obviously not enough to cover basic costs. Dues will need to be raised soon. An argument against a dues increase has always been, "Our older members on fixed incomes cannot afford it." This may be true in many cases, and consideration should be given to those who have contributed to the Lodge over the years and now need relief to remain members. However, even social security has seen more cost of living increases than our dues, and those of us who are gainfully employed should not see reasonable dues increases as a substantial hardship. An Associate Membership would help protect those who need it, keep some members active who may otherwise drop out, and clear the way for realistic dues evaluation and management.

Monitor Lodge No. 218
Vasa Order of America
9026 Chantal Way
Sacramento, CA 95829

Nonprofit Org.
U.S. Postage
PAID
Permit No. 771
Sacramento, CA

DATED MATERIAL
